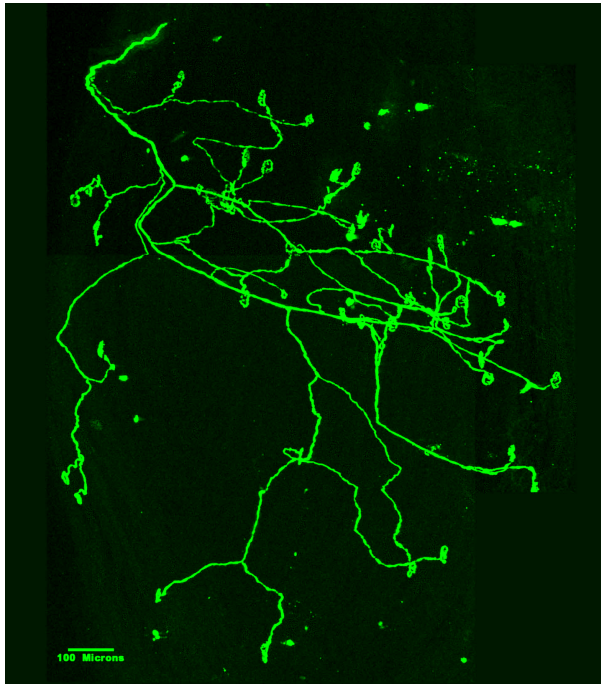


From snakes to inchworms: Adapting active contour models to discover line skeletons embedded in 3D volumetric data

Adrianna Teriakidis, David Sterratt & David Willshaw

Neuron



Blood vessels

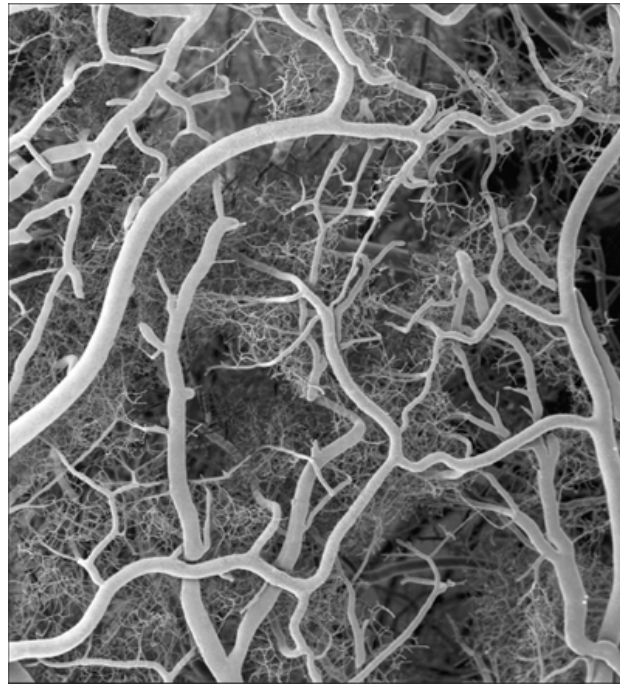


Image from the cover of *Cerebral Cortex*, March 2002, 12:3.

Lung tissue

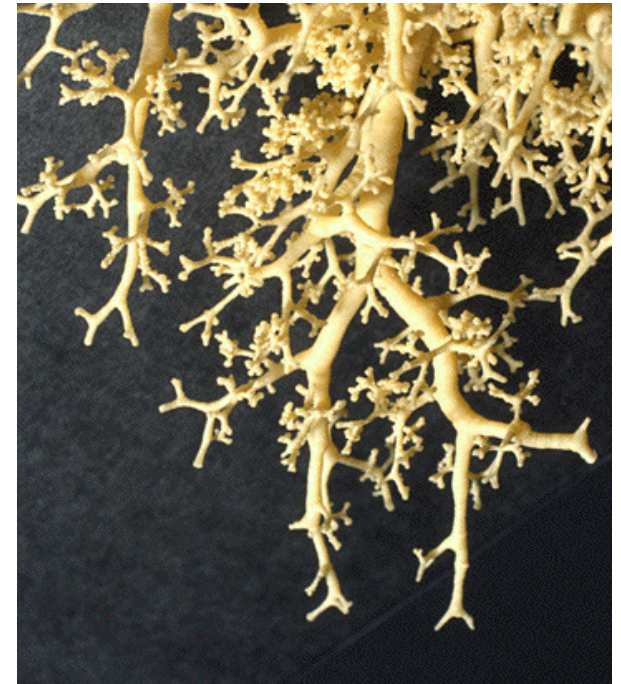


Image by Dr. Ewald R. Weibel from <http://classes.yale.edu/fractals/Panorama/Biology/Physiology/Physiology.html>